



**Ultimate Automation Solutions for  
Textile, Garment, and Home Furnishing  
Importers, Converters, Packagers, and  
Distributors**

**Textile/Garment Automation System**

**About MOD2**

MOD2 Inc. is a software company located in Los Angeles, California. Our state of the art software packages are designed to help textile, garment, and home furnishing companies to fully automate their business. With over 16 years of experience in the industry, MOD2 is the complete solution to your business needs.

**Partial list of Textile, Garment, and Home Furnishing Companies in MOD2**

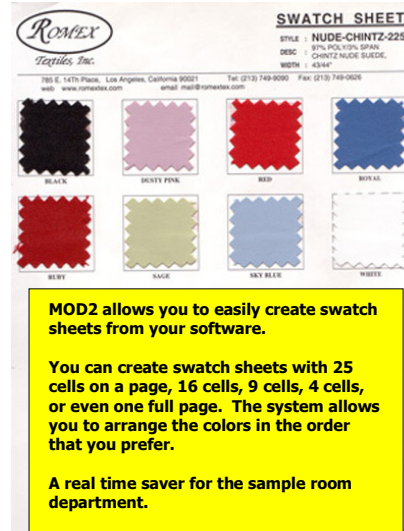


**What is MOD2?**

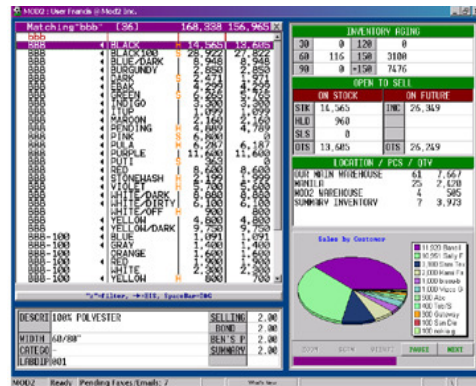
MOD2 is a software program that automates textile, garment, and home furnishing companies. Are you a textile/garment importer, converter, packager, or knitter? Do you want to increase the productivity of your organization? See why other companies have trusted our product and see how your company can benefit from our software package. We look forward to scheduling a demo with your company. To schedule an appointment, contact us @ (213) 747-8424 ext 215.

MOD2 professionally manages many aspects of your company's operation. Our software handles **Invoicing** and **Receivables**, along with complete management of your **Inventory** of finished goods and greige goods in detail and on a roll-by-roll basis. MOD2 controls the inventory of **Open to Sell** on both **Stock Goods** and on **Future Goods**. MOD2 creates your **Purchase Orders** to your suppliers, **Receiving of Goods**, **Shipping Advises**, **Sales Orders** from your customers, **Credit Approval** from the factors, creation of **Packing Lists**, billing, **Assignment** to the factors, collections, payments from customers, salespersons **Commission**, and the list goes on and on. It is all under one roof with "one" software designed for the particular industry that you are in. At each point along the flow of a textile/garment operation, we have designed MOD2 to easily provide you and your staff with the tools and reports to utilize the information in your MOD2 system to enhance and automate your company.

**The bottom line: MOD2 software will help you save time, reduce duplicate of work, and increase the productivity of your staff in your company.**



Sample swatch sheet created from MOD2



Sample screenshot of inventory

**How to reach us:**

**Contact Person:** Javid Nia  
**Tel #:** (213) 747-8424  
**Fax #:** (213) 747-9250  
**Email:** javid@mod2.com  
**Website:** www.mod2.com

**Address:** 3317 South Broadway  
Los Angeles, CA 90007  
USA

**❑ What users say about using MOD2?**

"I believe that Peyk International was Javid Nia's first program user, dating back over sixteen (16) years. During that time, Javid has developed and refined the program now known as MOD2. The program is consistently updated and modified to better serve its' users. The program is comprehensive, encompassing every aspect and process including Importing, Converting, Inventory Control, Sales and Receivables, confirming Javid's familiarity with, and understanding of, The Textile Industry. The staff of MOD2 is friendly, courteous, and helpful. After ten years, I consider Javid "family" and rely greatly on him personally, and on the MOD2 program."

**Ms. Charlii of Peyk International Inc. (MOD2 User since 1986)**

"MOD2 is a very friendly software, and it has become a very extensive and complete program. I believe it is almost impossible to be in the textile business and not have MOD2 as your best friend. Javid and his friendly and courteous staff are a part of our company and we appreciate their on going support."

**Mr. Roubik of Nouveau Fabrics Inc. (MOD2 User since 1995)**

**❑ MOD2 Packages**

**MOD2 CONVERTING MODULE**  
**For Fabric Converters:** handles the process of turning greige goods (Woven) into finished goods. Handles greige lot receiving: 1<sup>st</sup>, 2<sup>nd</sup> and other quality Rolls and Bales. Manages Dye Orders: woven, dye instructions, re-dyes, receiving from dye houses, automatic working loss calculation, open and pending.

**MOD2 OVER WEB MODULE**  
 Package allows usage of MOD2 over the web. Salespersons, showrooms, owners, and accountants can login over the web in a fast and secured manner to use the package anywhere there is a connection to the internet. Extensive security rules allow customizations to what users are able to see over the web. No maintenance or uploading of data ( Requires a Windows 2003 server hardware and DSL ).

**MOD2 KNITTING MODULE**  
**For Knitters:** handles purchases of yarn, receiving of yarn. Manages creation of knit memo to turn yarn goods into knit greige goods. Manages knit dye orders to turn knit greige goods into finished knit goods.

**MOD2 SECURITY MANAGER**  
 Prevents security violations and encrypts data on the server for security Purposes. The access to features in mod2 can be controlled on a per user basis.

**MOD2 ADVANCED IMPORTER MODULE**  
 Carved sales orders, open-to-sell reports on stock and on future goods. Associate expenses manager per receiving. Handles importing on a detailed level. Links customer's orders with supplier's orders. Allows incoming purchases to be carved for specific customers and manages hot-sheets. Extensive reporting capabilities on future goods, and on past shipments.

**MOD2 GARMENT MODULE**  
**For Garment Importers/Packagers:** handles inventory in sizes, box information such as box length, width, and height, units/pcs per box, weight and volume per box. Allows automatic packing and billing.

**MOD2 HEAT TRANSFER/PAPER PRINT MODULE**  
 Requires MOD2 Advanced importer module and MOD2 Knitting Module. Manages the process of handling paper designs and greige fabric for a paper print process.

**MOD2 MULTIPLE WAREHOUSE MANAGER**  
 For high volume importers/converters with the multiple warehouses. Easily move rolls or entire shipment in between warehouses. Segregates inventory by warehouse.

**MOD2 SCANNED INVENTORY MODULE**  
 Allow you to scan in hi-resolution images from your scanner or digital camera in to MOD2. Images of fabrics appear when you lookup inventory or any transaction associated with that item

**MOD2 BAR-CODING MODULE**  
 Includes detailed shipment and receiving on roll by roll basis. Laser-gun and bar-code reader interface and facilitates creation of barcode Stickers upon Receiving, uses Universal bar-code technology, facilitates with vendors to Produce bar-code Stickers in advance.

**MOD2 MULTIPLE DIVISION MANAGER**  
 For companies with multiple divisions, setup charges for forms for each division can apply.

**MOD2 NETWORK FAXING SYSTEM**  
 Allows outbound faxing from any MOD2 workstation. Can fax any form or report from the Mod2 software.

**MOD2 NETWORK EMAILING MODULE**  
 Allows outbound emailing from any MOD2 workstation. Can email any form or report from the Mod2 software.

**OTHER MOD2 MODULE**  
 MOD2 Sample room manager, Electronic receiving, Stickers and Swatches, Factor Manager, .... (For more information call MOD2)

**❑ MOD2 is designed to run in a network environment and run's on all PC running Window Vista, XP, 2000, 98, and NT4.**

**How to reach us:**

**Contact Person:** Javid Nia  
**Tel #:** (213) 747-8424  
**Fax #:** (213) 747-9250  
**Email:** javid@mod2.com  
**Website:** www.mod2.com

**Address:** 3317 South Broadway  
 Los Angeles, CA 90007  
 USA